

MY WORK – FRAGMENTS ^{1990 – 2023}

Dr. Martin Kovarik

A handwritten signature in white ink, appearing to read 'Martin Kovarik', with a stylized flourish at the end.

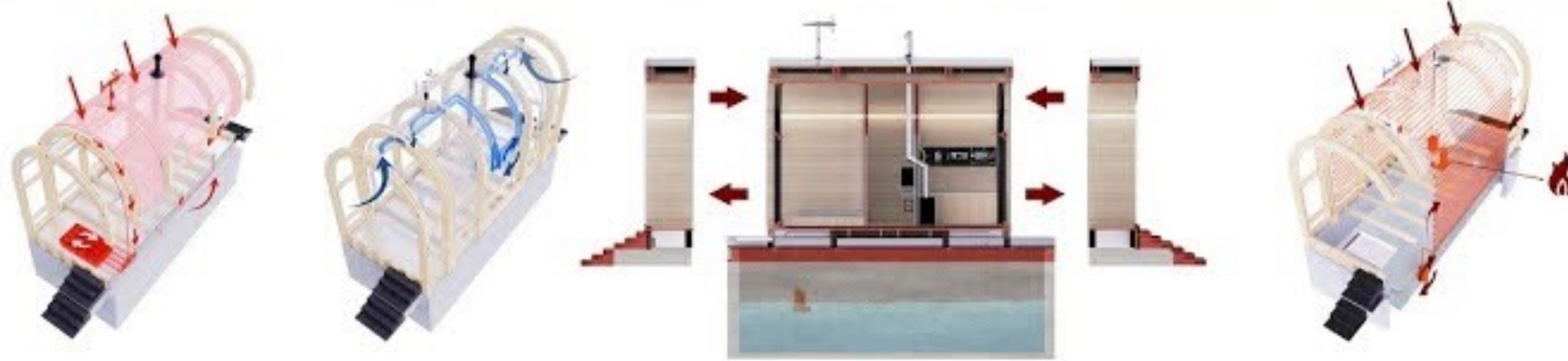
co-authors:
Martin Coufal
Nikola Čapková

MICROHOME 2020

Independent tunnel house on 25m²

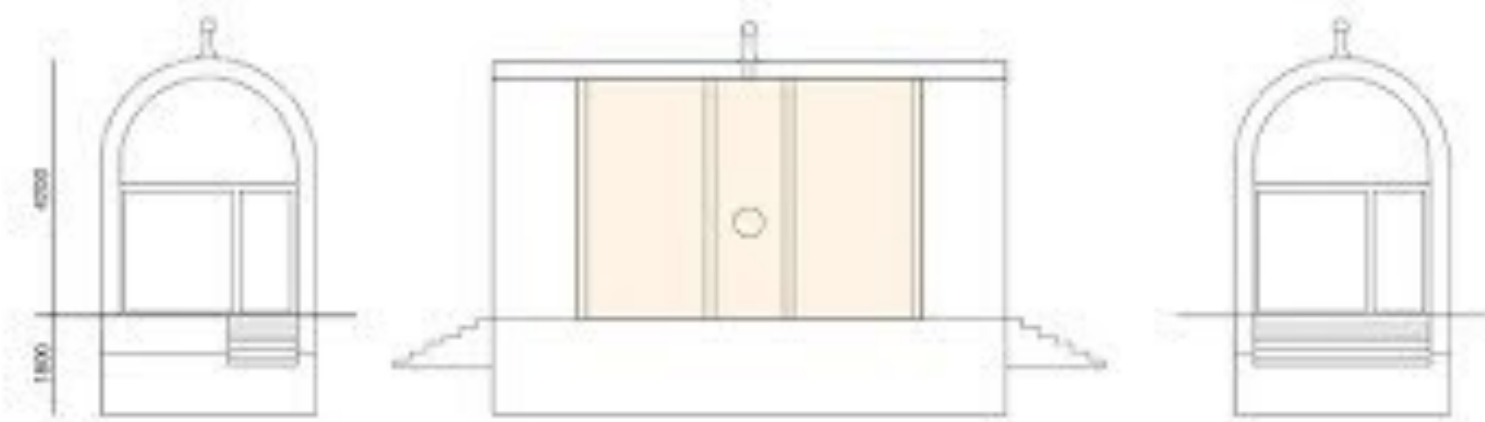


About it



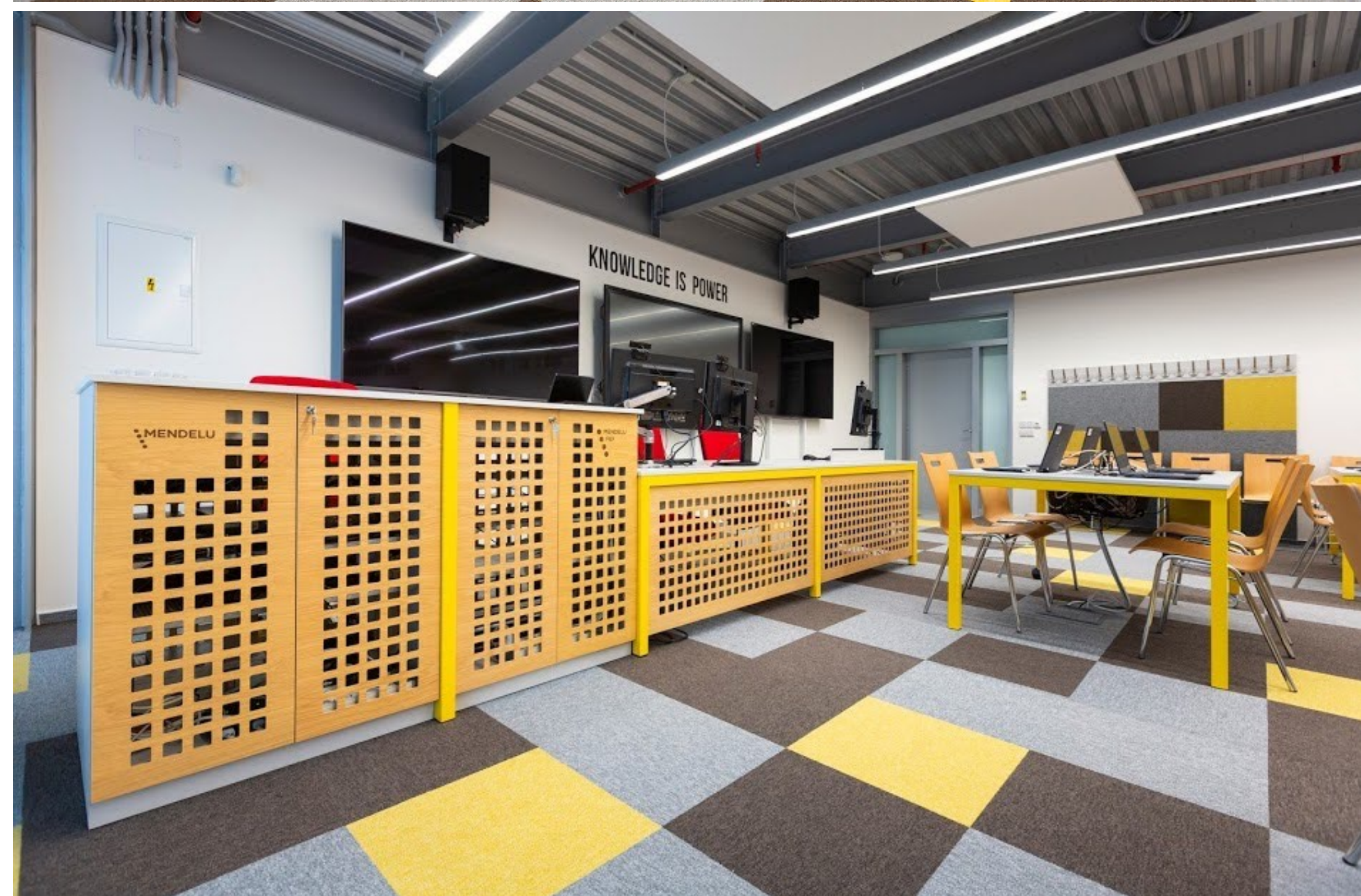
MODULAR SYSTEM >> MAIN MODUL
> living/working unit 7,3 m² / 21 m³
> hygiene unit 4,8 m² / 14 m³
> sleeping unit 7,3 m² / 21 m³
>> TERRACE MODUL 5,1 m²

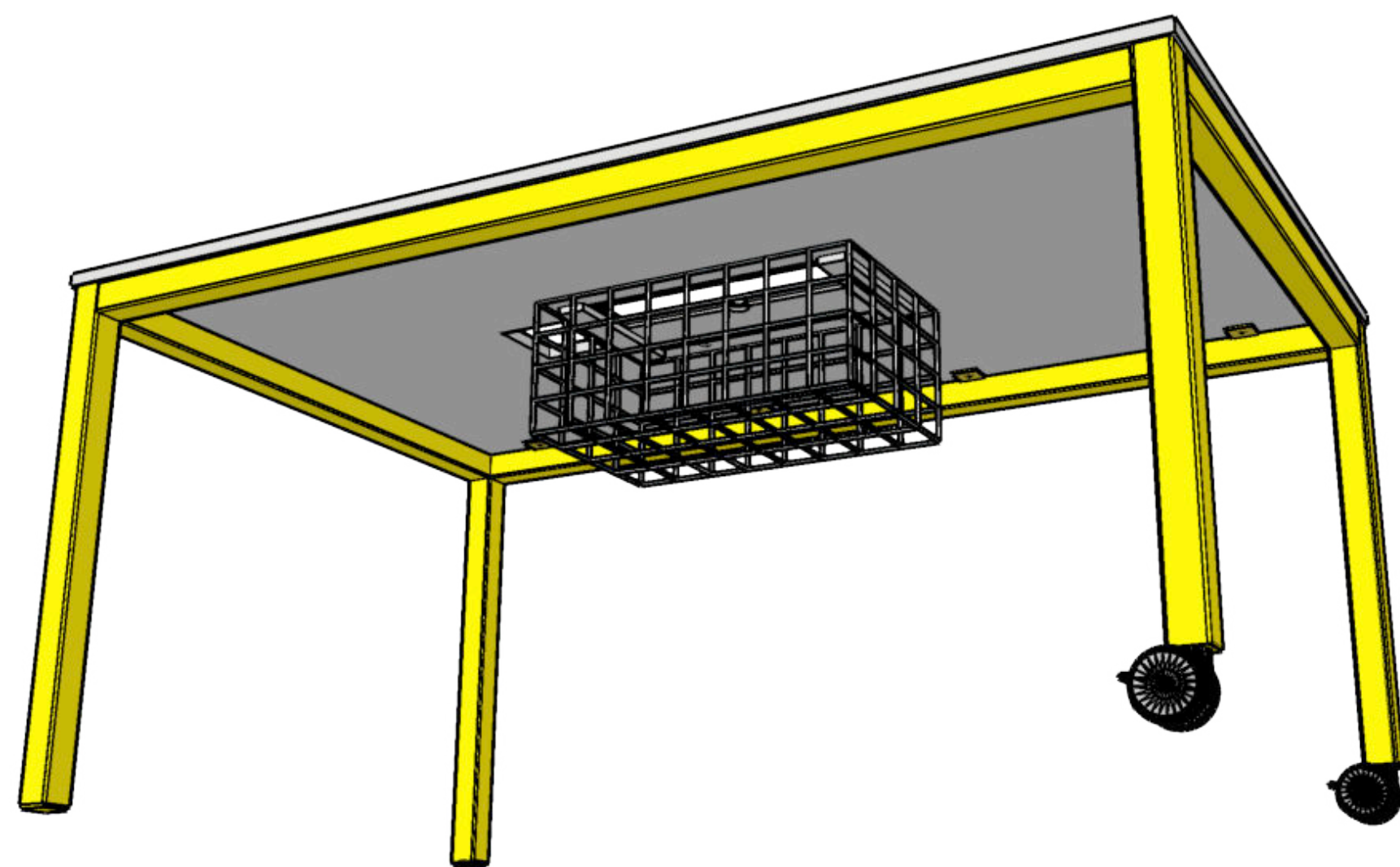
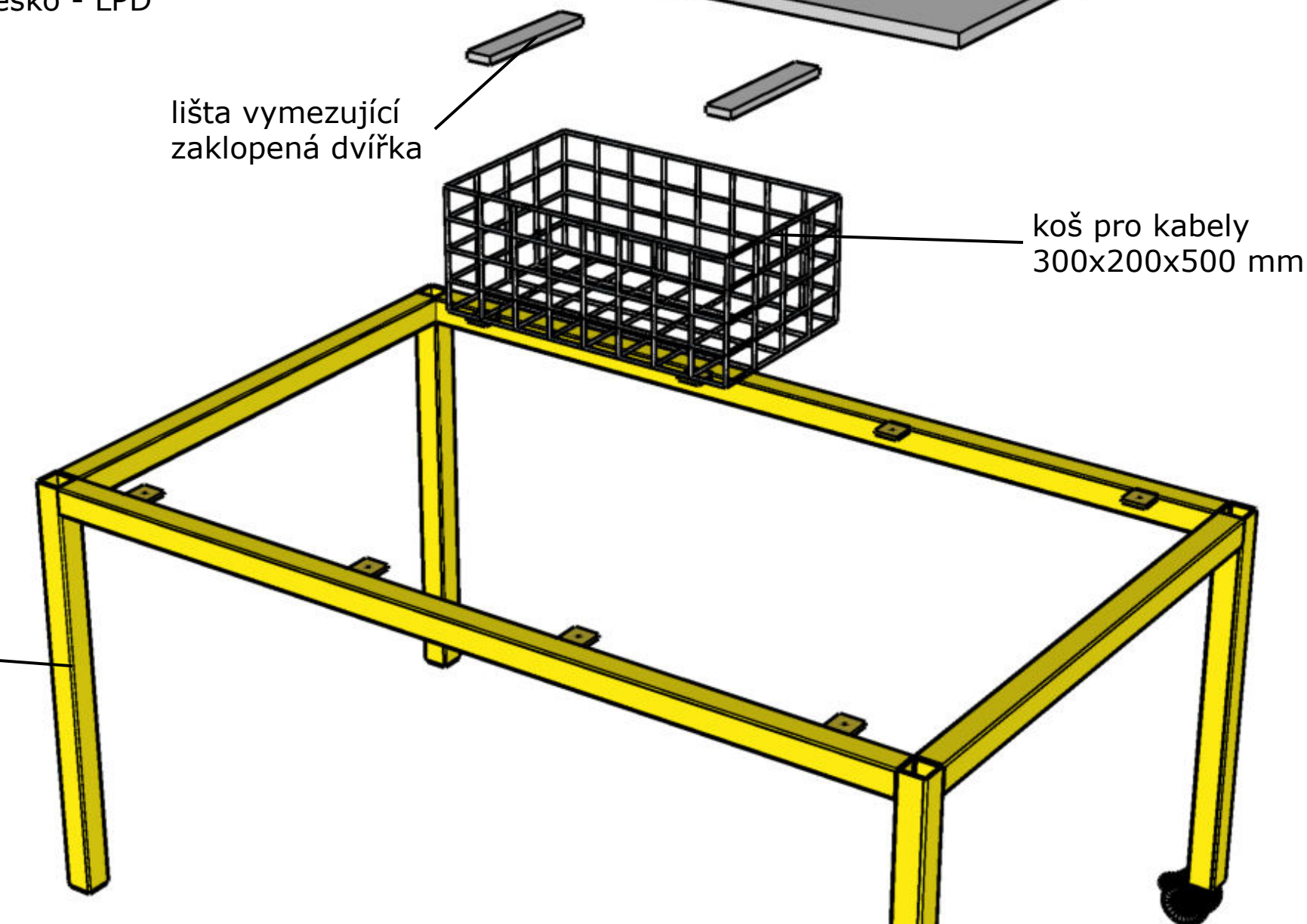
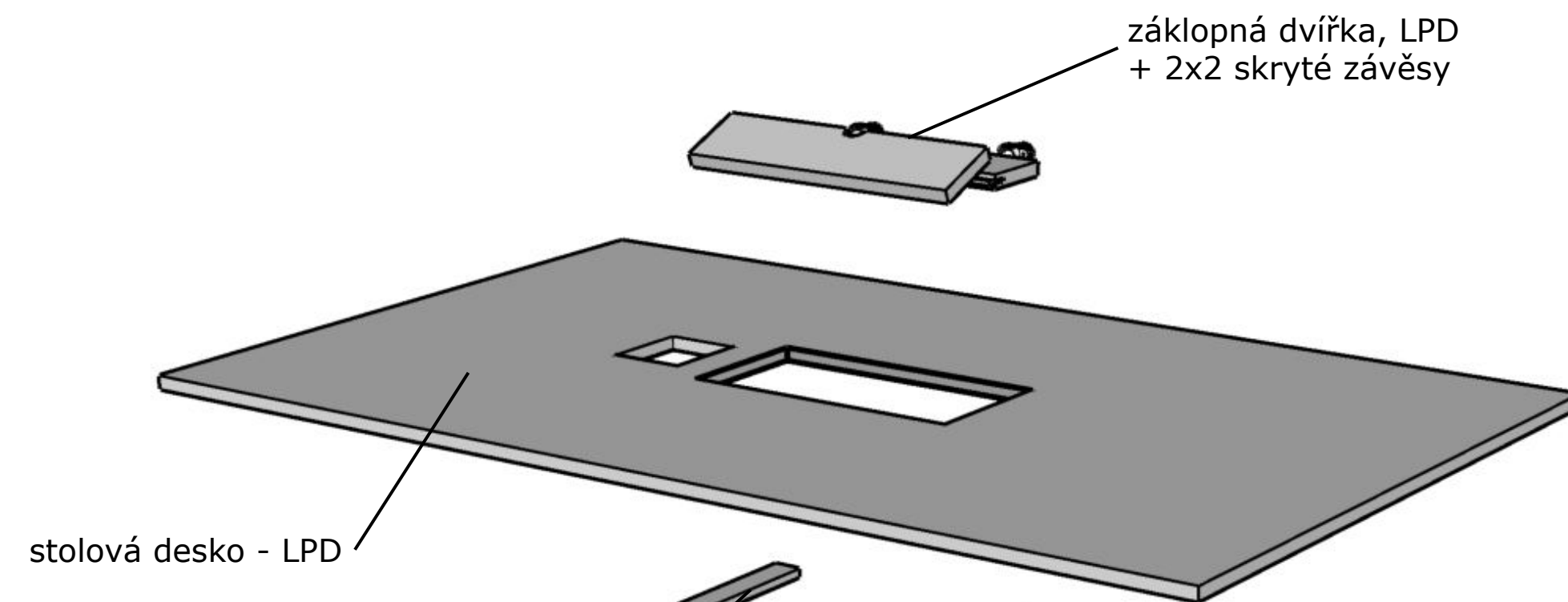
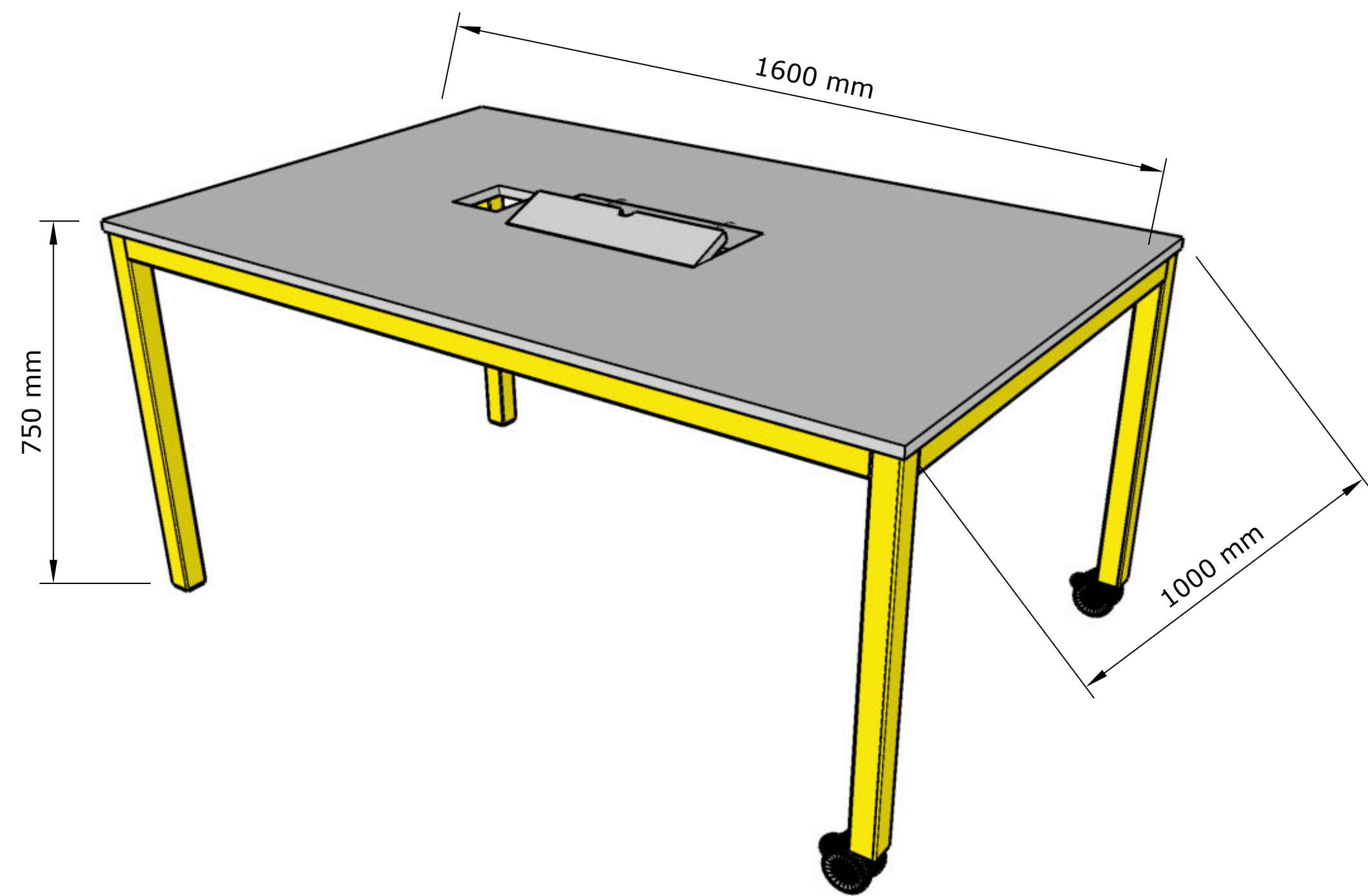
TOTAL RECYKLATION
= minimal waste systems >> heat-retaining fireplace > incineration toilet
> gray water and rain water circulation
> solar thermal collectors > solar transparent panels > recycling house construction (wood, metal, glass, foam)



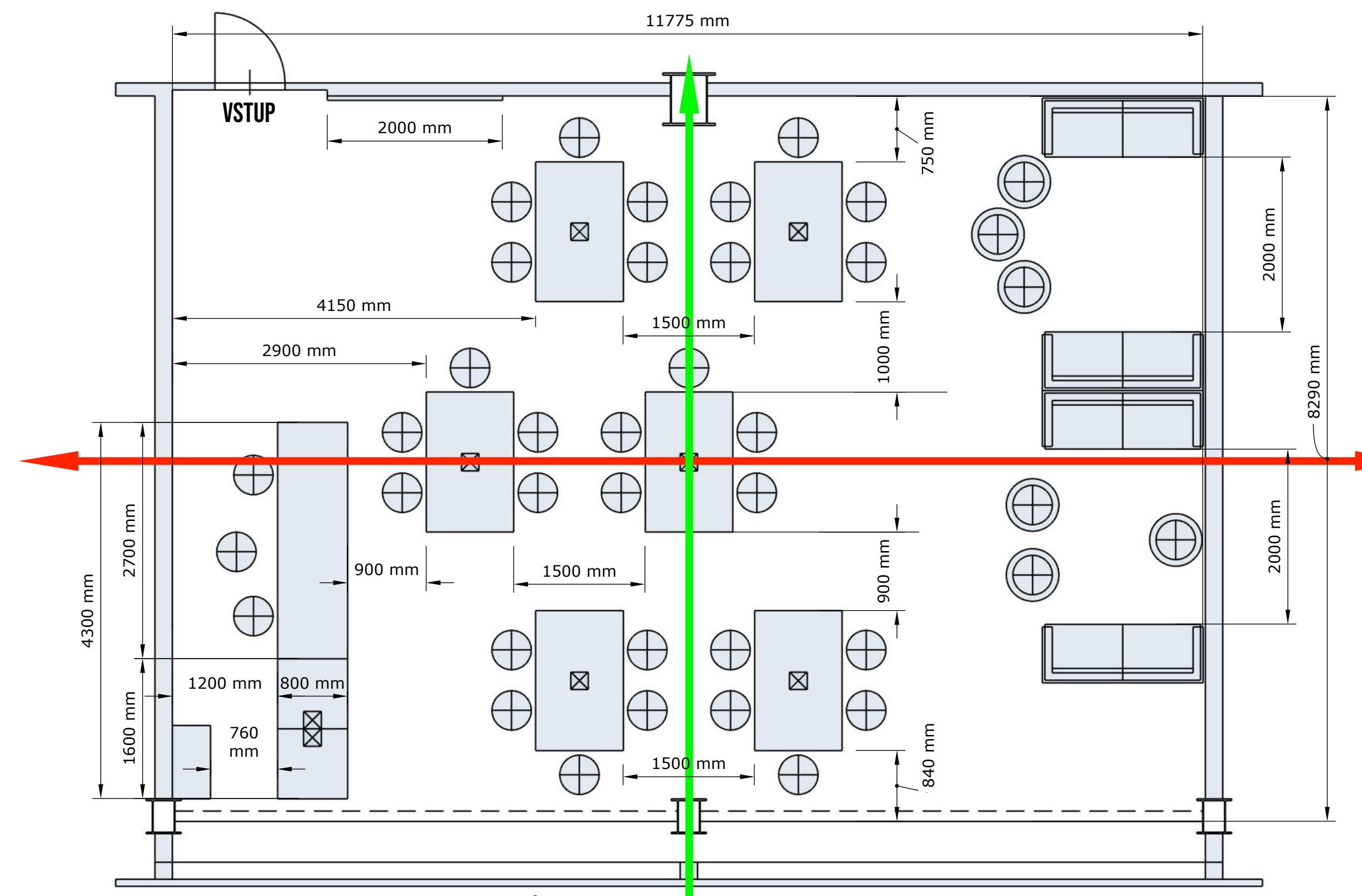
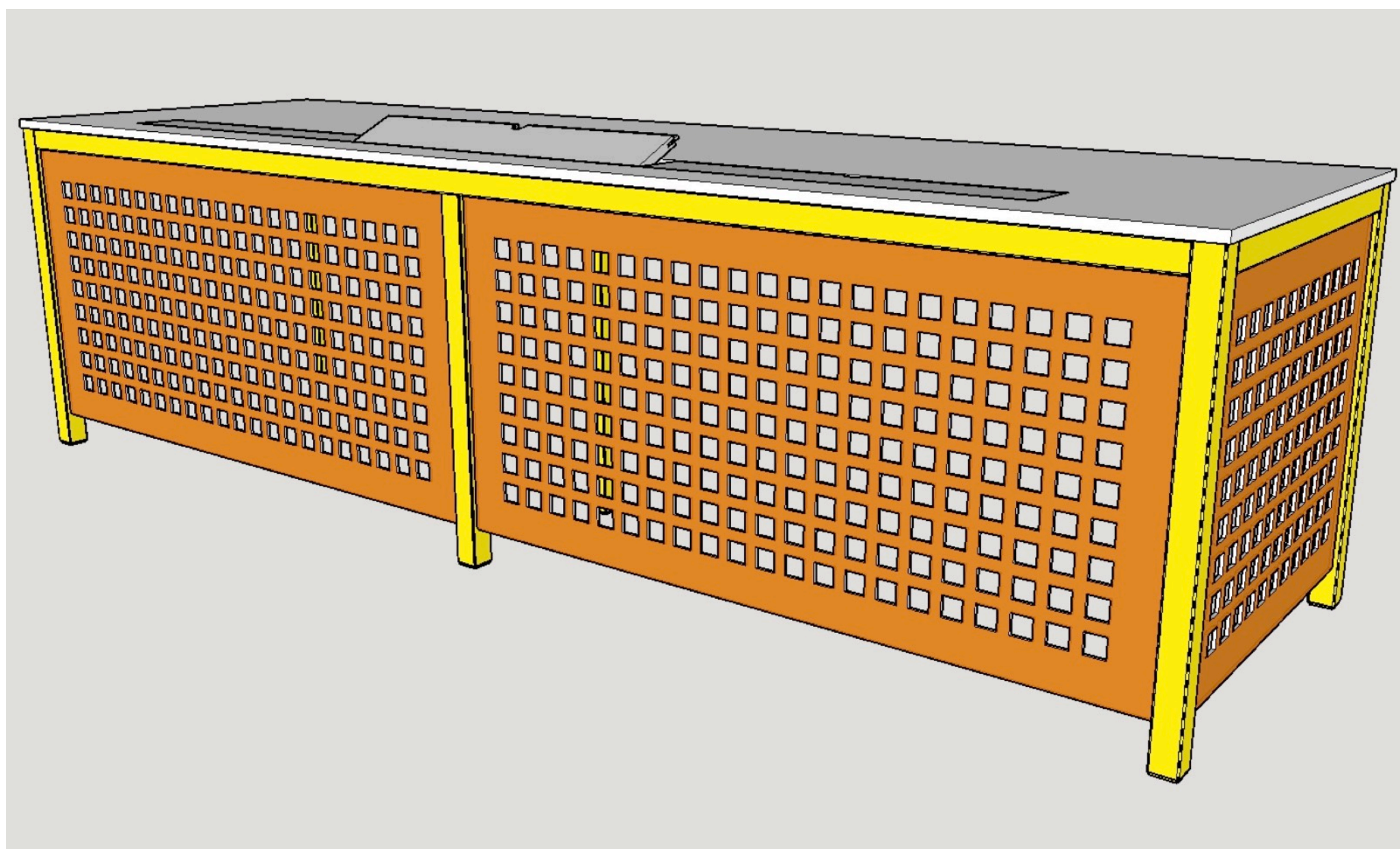
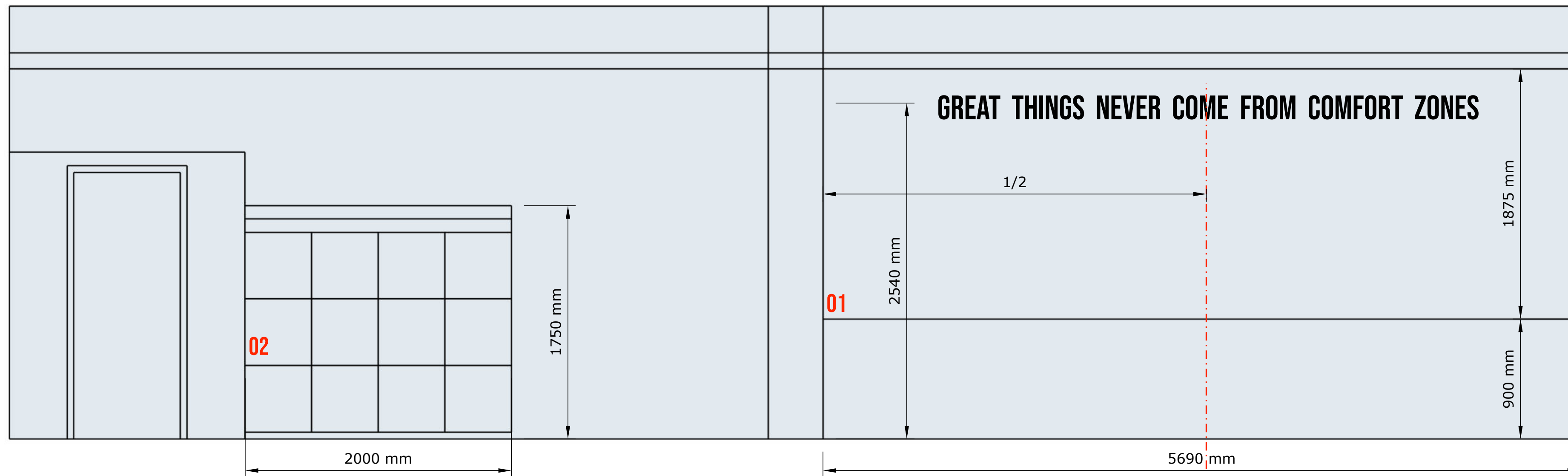


2019 - 2020
MENDEL UNIVERSITY CLASSROOM
INTERIOR & FURNITURE DESIGN



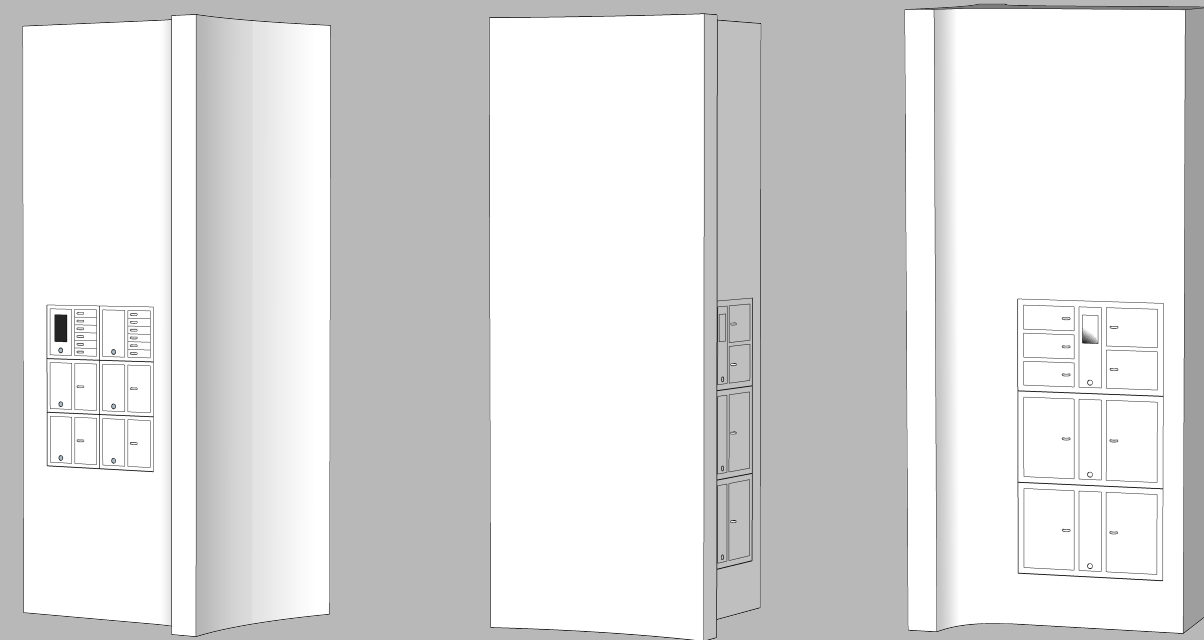
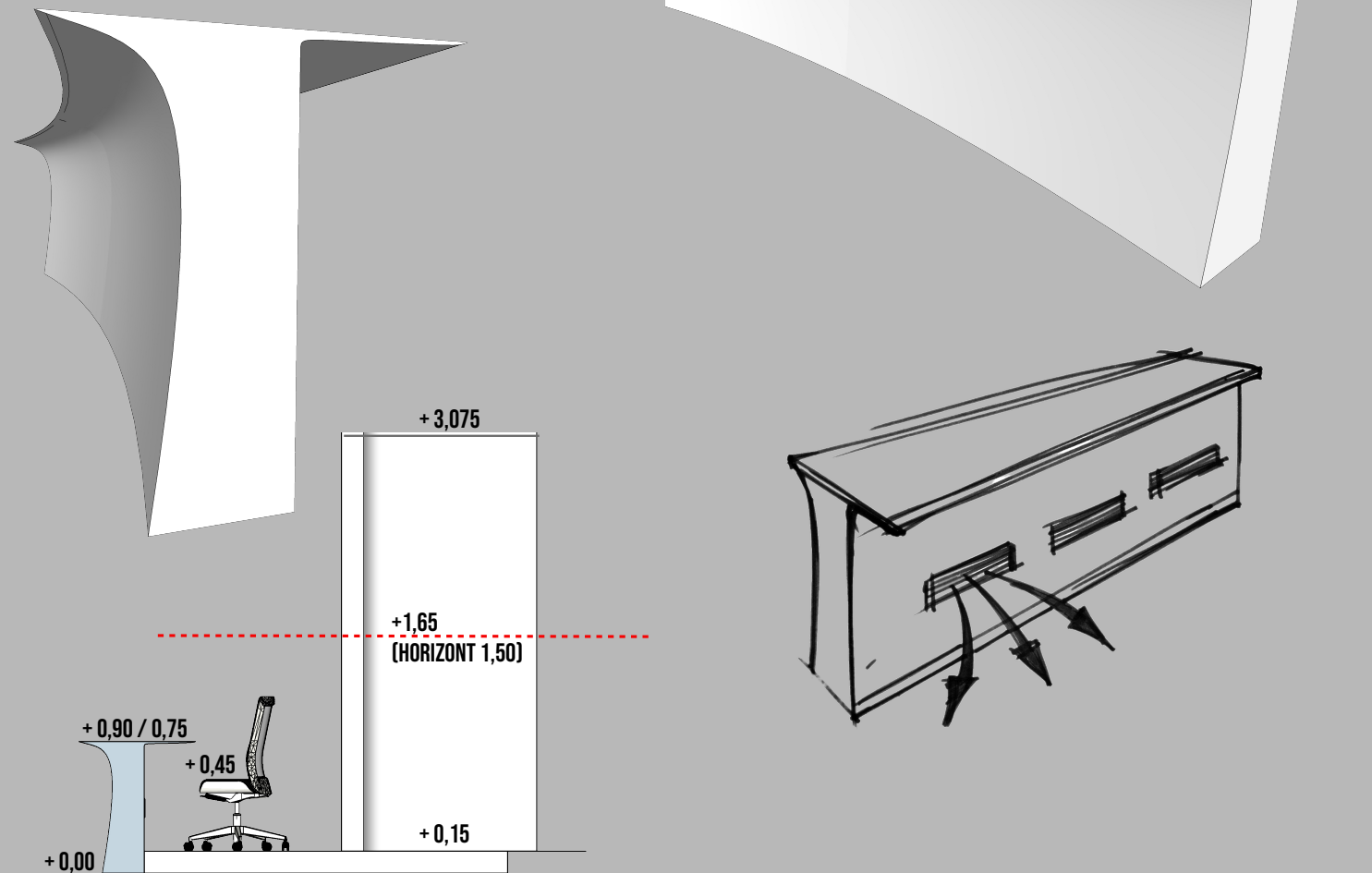


CELKOVÉ ŘEŠENÍ



PULT RECEPCE

UMĚLÝ KÁMEN AVONITE
ODSTÍN BELLISSIMO 6720 POLISHED
3 660 X 800 X 900 (750) MM



SLOUP - ZÁZEMÍ RECEPCE

UMĚLÝ KÁMEN AVONITE - ODSTÍN BELLISSIMO 6720 POLISHED - 1 190 (600) X 1 330 X 3 075* MM
OSÁZENO BEZPEČNOSTNÍMI SCHRÁNKAMI NA KLÍČE (KEYBOX), ZBRANĚ A DOKUMENTY (VALUEBOX)
Z ČELNÍ STRANY LOGO NEBO NÁPIS "MPO" V SOULADU S VIZUÁLNÍM STYLEM

POZN.: *VÝŠKOVĚ NAVAZUJE NA PŘEKLAD SLOUPŮ

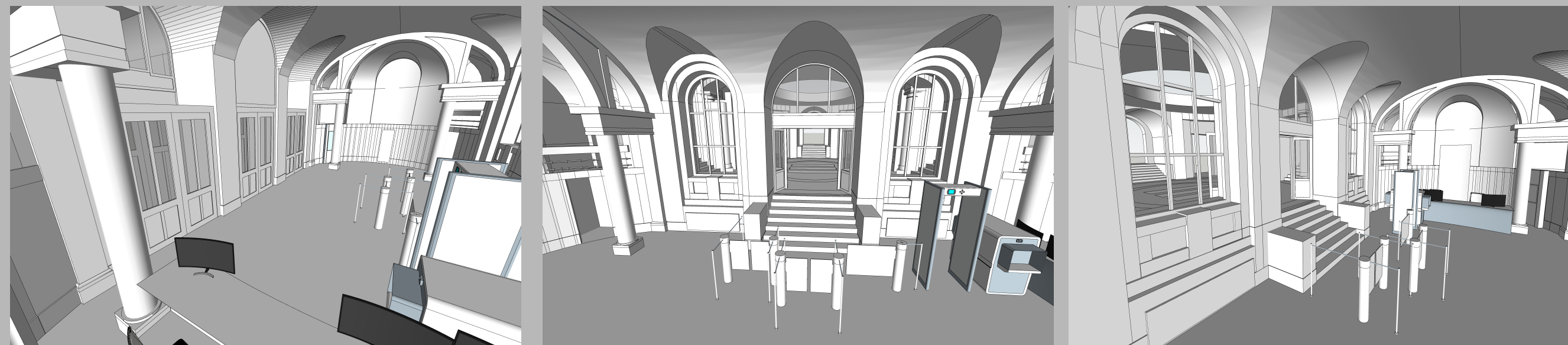
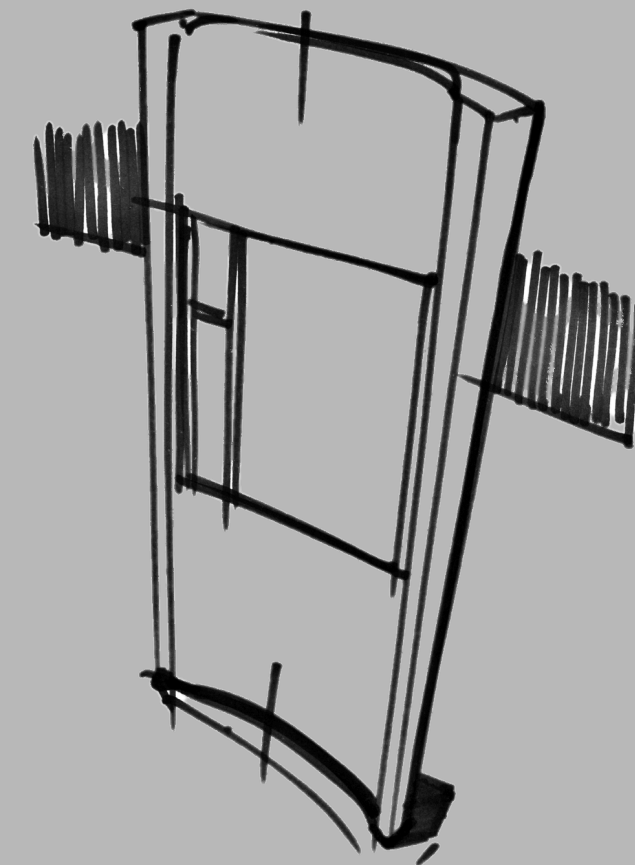
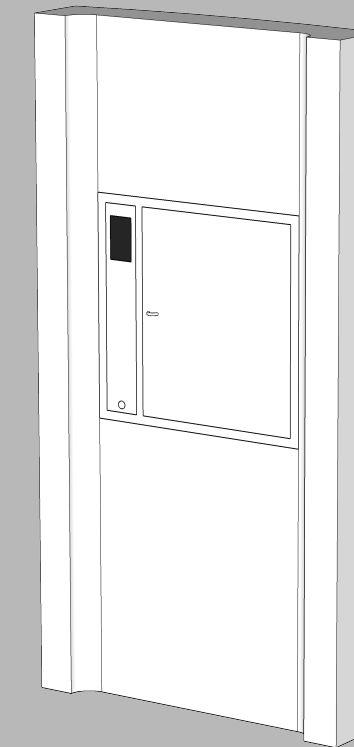
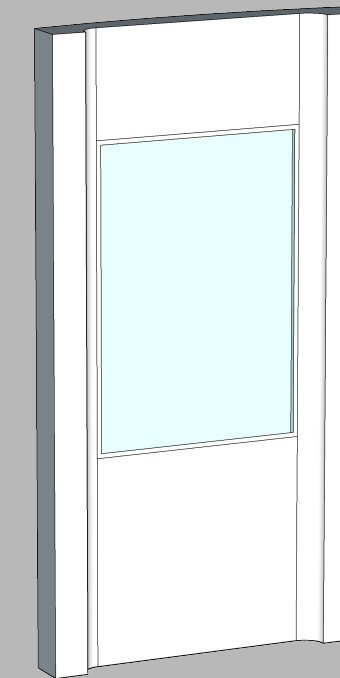
SLOUPY

UMĚLÝ KÁMEN AVONITE - ODSTÍN BELLISSIMO 6720 POLISHED

SLOUP PRO 98 KLÍČŮ "KEYCONTROL" S ČIPY PRO SAMOOSLUŽNÝ PROVOZ - 1 135 X 260 X 2 020* MM

SLOUP S VNITŘNÍM OSVĚTLENÍM LED PRO POVINNÉ INFORMACE (PAPÍR, ALT. DISPLAY) - 1 135 X 185 X 2 020*

POZN.: *VÝŠKOVĚ NAVAZUJE NA KAMENNÝ OKLAD STĚNY



HISTORICAL
BUILDING
PRIZED

2019
ENTRANCE
HALL
OF THE
INDUSTRY
MINISTRY

2016 PHARMACY DAČICE

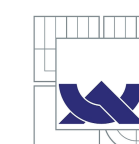


co-author: Lukáš Fixel



2011 DOCTORAL THESIS:

ANTHROPOMETRIC RESEARCH OF THE ADULT POPULATION AND ITS APPLICATIONS IN INTERIORS AND ARCHITECTURE



VYSOKÉ UČENÍ TECHNICKÉ V BRNĚ
BRNO UNIVERSITY OF TECHNOLOGY

AUTOR PRÁCE / AUTHOR: Ing. arch. MARTIN KOVAŘÍK
VEDOUČÍ PRÁCE / SUPERVISOR: prof. Ing. arch. JILJÍ ŠINDLAR, CSc.

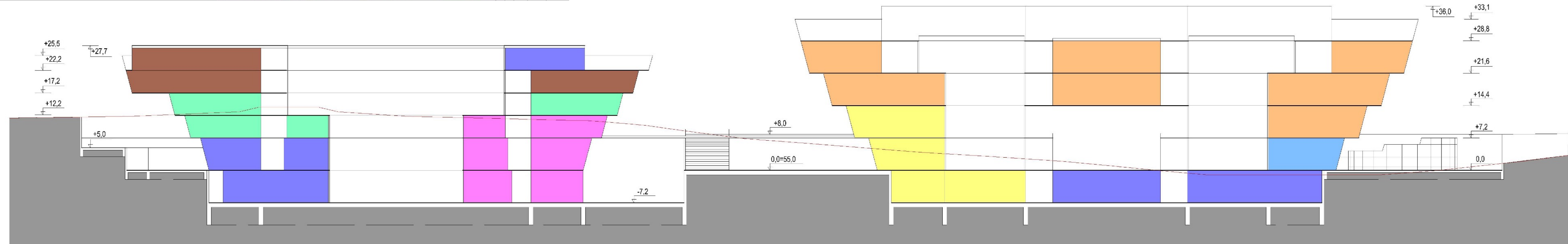
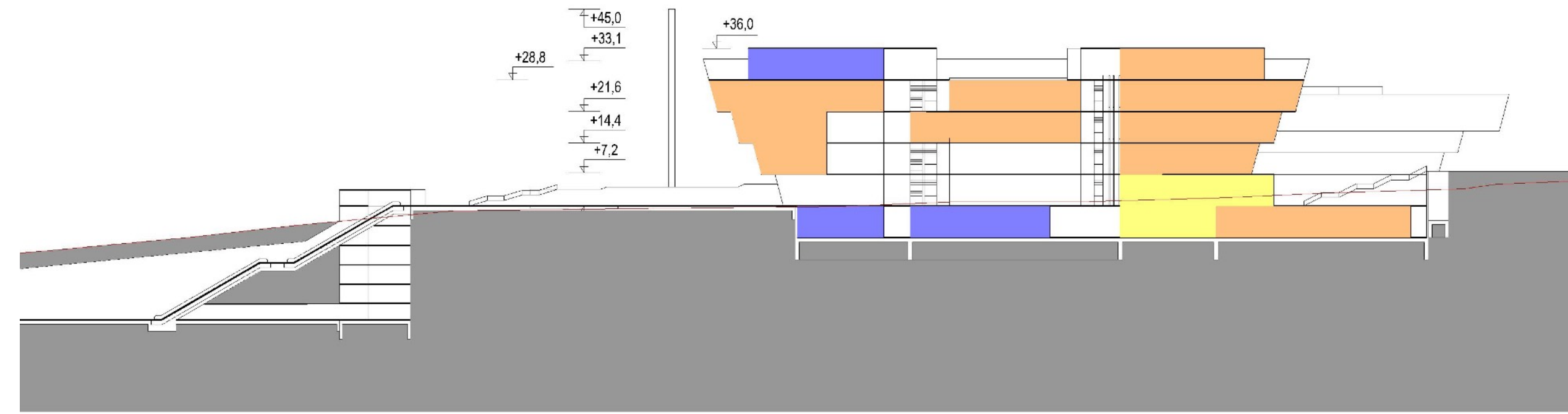
FAKULTA ARCHITEKTURY
ÚSTAV NAVRHOVÁNÍ VI.
FACULTY OF ARCHITECTURE
DEPARTMENT OF DESIGN VI.

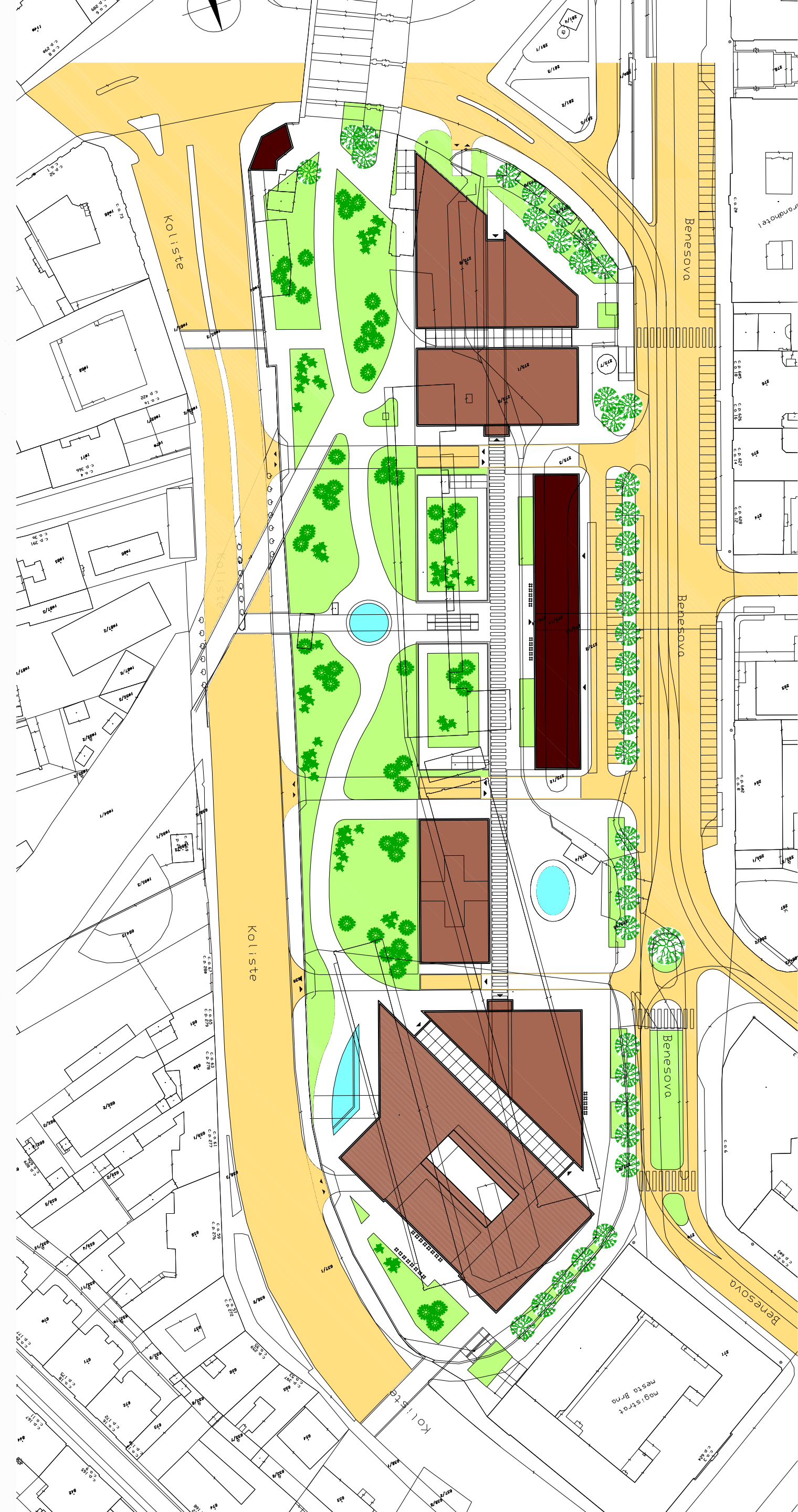


2002 THE GREAT EGYPTIAN MUSEUM CAIRO

co-authors: Ing. arch. Jiří Mikšík, Ing. arch. Martin Mikšík, Ing. arch. Jiří Bradáč

COMPETITION

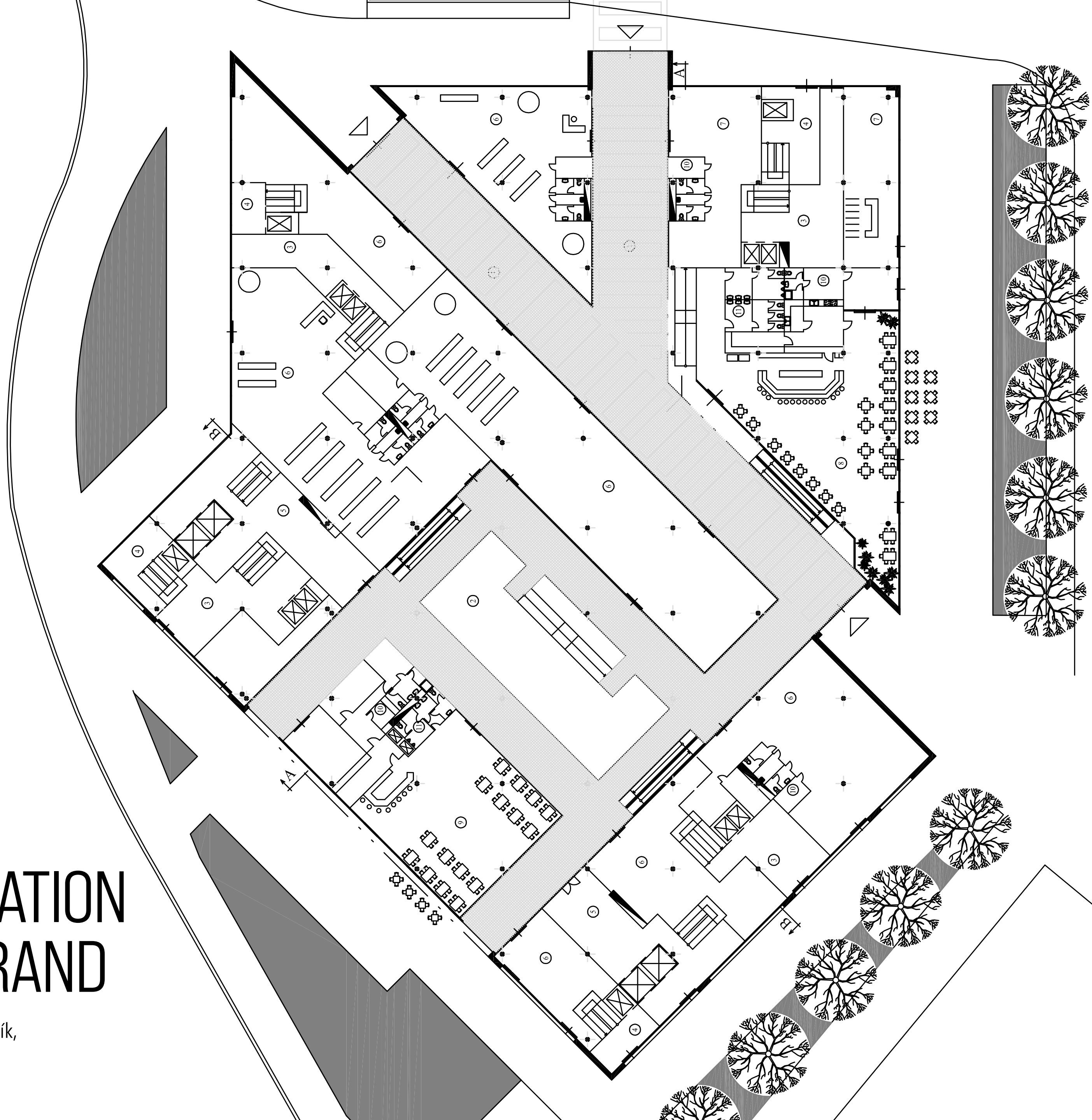




COMPETITION
2ND PRIZE

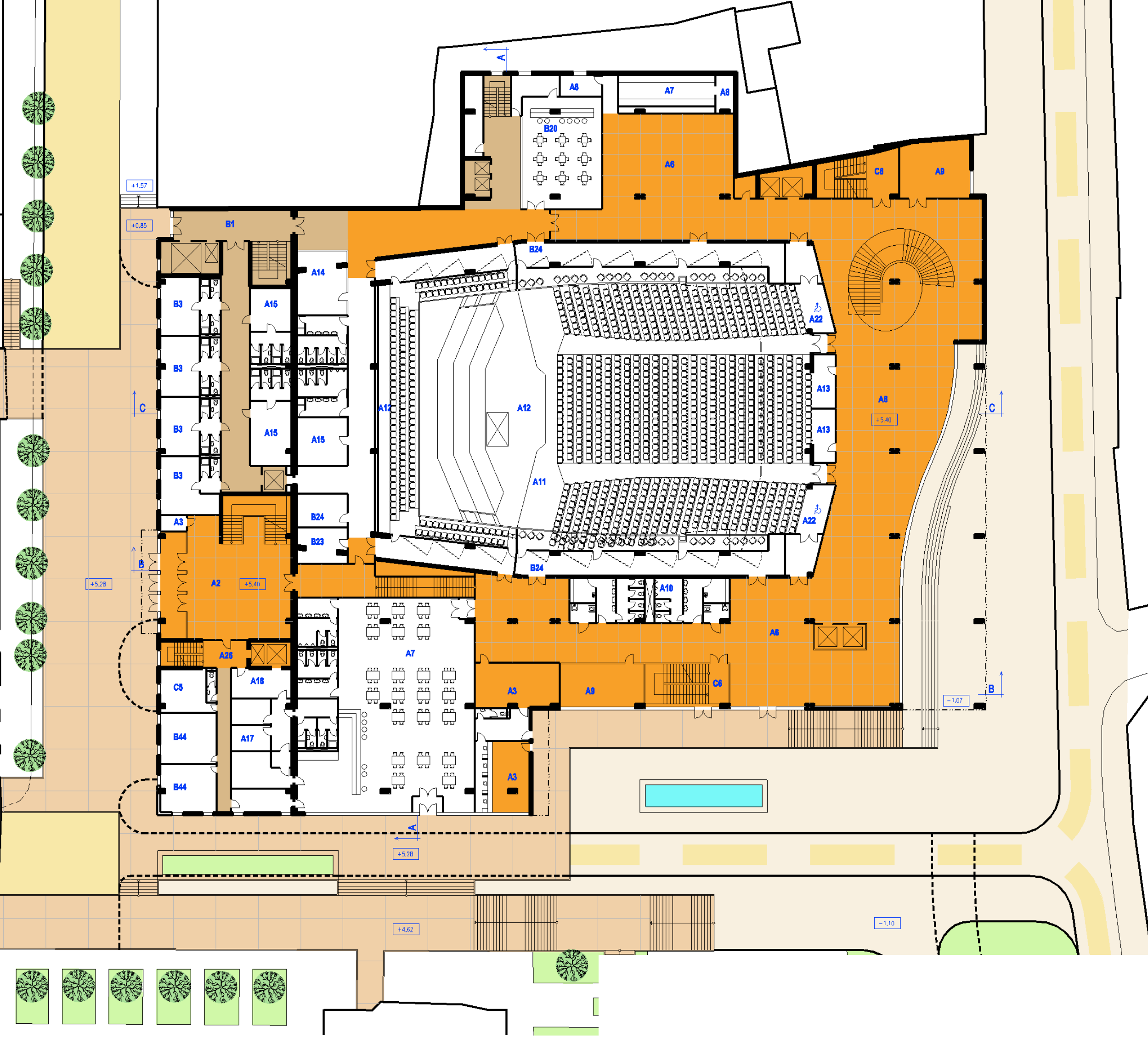
2001 LOCATION BRNO – GRAND

co-authors: Ing. arch. Jiří Mikšík,
Ing. arch. Martin Mikšík



2000 THEATRE REDUTA BRNO

co-authors: Ing. arch. Jiří Mikšík, Ing. arch. Jiří Bradáč



HISTORICAL BUILDING
COMPETITION



2000 REGIONAL COUNCIL PRESIDENT OFFICE INTERIOR & FURNITURE DESIGN

co-author: Ing. Lukáš Fictum

HISTORICAL BUILDING



1999 RESIDENTIAL HOUSE INTERIORS

INTERIOR & FURNITURE DESIGN

co-author: Ing. arch. Jiří Bradáč

I n t e r i e r
r o d i n n ě h o
d o m u

Jablonec n.
N i s o u
1 9 9 9

Ing. arch. Martin
K o v a ř í k
Ing. arch. Jiří
B r a d á č

I n t e r i e r
r o d i n n ě h o
d o m u

Jablonec n. Nisou
1 9 9 9

Ing. arch. Martin Kovařík
Ing. arch. Jiří Bradáč
Šperky Miroslav Štěpánek



Rohová skříňka „Vlnovka“

Ing. arch. Martin Kovařík

Ing. arch. Jiří Bradáč



C E R T I F I K Á T

ŘEDITEL DESIGN CENTRA ČESKÉ REPUBLIKY SE SÍDLEM V BRNĚ
uděluje ocenění
DOBRÝ DESIGN '99



AUTOR DESIGNU:

Ing. arch. Jiří Bradáč
Ing. arch. Martin Kovařík

Výrobek:

Rohová skříňka

Výrobce:

IN AD, spol. s r.o., Brno

REGISTRAČNÍ ČÍSLO:

04/99-027/4A

Tento certifikát opravňuje k označení DOBRÝ DESIGN '99

Kovářík

ŘEDITEL DC ČR



1999 CORNER CABINED

co-author:
Ing. arch. Jiří Bradáč

COMPETITION – PRIZED

Jídelní stůl

Ing. arch. Martin Kovářik

„Mrak“

Ing. arch. Jiří Bradáč



1999 FURNITURE DESIGN

co-author:
Ing. arch. Jiří Bradáč



Vitrína

Ing. arch. Martin Kovářik

„Focus“

Ing. arch. Jiří Bradáč





1998
FURNITURE
DESIGN

Stolek pro
telefon
Brno 1998
Ing. arch. Jiří
Bradáč
Ing. arch. Martin
Kovářík



INTERIOR &
FURNITURE
DESIGN

co-author: Ing. arch. Jiří Bradáč

1996
SHOWROOM
FOR
MERCEDES
BENZ



Autosalon
Mercedes Benz
Brno 1996

Ing. arch. Martin Kovářik
Ing. arch. Jiří Bradáč

1989 – 1990 HOTEL VORONĚŽ BRNO INTERIOR & FURNITURE DESIGN

co-authors: Ing. arch. Jiří Mikšík, Ing. arch. Martin Mikšík









I n t e r i é r
r o d i n n ě h o d o m u
B r n o 1 9 7 7
Ing. arch. Martin Kovařík
Ing. arch. Jiří Bradáč



1997 RESIDENTIAL HOUSE INTERIORS

INTERIOR & FURNITURE DESIGN

co-author: Ing. arch. Jiří Bradáč

I n t e r i é r r o d i n n ě h o
d o m u
B r n o 1 9 7 7
Ing. arch. Martin Kovařík
Ing. arch. Jiří Bradáč





Interiér rodinného domu
Brno 1977



Ing. arch. Martin
K o v a ř i k
Ing. arch. Jiří
B r a d á č

1997 RESIDENTIAL HOUSE INTERIORS

INTERIOR & FURNITURE DESIGN

co-author: Ing. arch. Jiří Bradáč



Interiér
rodinného domu
Brno 1997
Ing. arch. Martin Kovařík
Ing. arch. Jiří Bradáč
Bc. Pavla Pfibranská





Brněnský pokoj 1997

Jan Hrubý, Ing. arch. Martin Kovařík, Ing. arch. Jiří Bradáč,
Ak. arch. Petr Lechner, Ing. arch. Hynek Moňák,
Miroslav Štěpánek, Ak. soch. Patrik Vlček, prof. Warlamis,
Ak. mal. Kateřina Zorziá



1997 EXHIBITION

CONCEPT & FURNITURE DESIGN

co-authors:
Ing. arch. Jiří Bradáč
Miroslav Štěpánek
Patrik Vlček



Ing. arch. Martin Kovařík
Ing. arch. Jiří Bradáč
Miroslav Štěpánek
Ak. soch. Patrik Vlček



Brněnský pokoj 1997



1992 – 1995 EKOSIGMA HRANICE OFFICE – INTERIOR & FURNITURE DESIGN

HISTORICAL BUILDING

co-author: Ing. arch. Jiří Mikšík





1994 - 1996 URBAN PLANS OF HISTORICAL DOWNTOWN BRNO

authors: Ing. arch. Jiří Mikšík, Ing. arch. Josef Němec and others

1992 RESTAURANT – INTERIOR & FURNITURE DESIGN

co-authors: Ing. arch. Jiří Mikšík, Ing. arch. Martin Mikšík





Kanceláře ACV Pro
Brno 1996 - 2000

Ing. arch. Martin Kovařík
Ing. arch. Jiří Bradáč



1996 - 2000 OFFICE INTERIORS

INTERIOR & FURNITURE DESIGN

co-author: Ing. arch. Jiří Bradáč

Kanceláře ACV Pro, Brno, 1996 - 2000

Ing. arch. Martin Kovařík, Ing. arch. Jiří Bradáč





Prodejna
elektroniky
Brno 1994



Ing. arch. Martin Kovařík
Ing. Arch. Jiří Bradáč

1994 – 1997 COMMERCIAL INTERIORS

INTERIOR & FURNITURE DESIGN

co-author: Ing. arch. Jiří Bradáč

Ing. arch. Martin
K o v a ř í k
Ing. arch. Jiří
B r a d á č



Jednací
prostory
Sklárny v
Úsobrně
1 9 9 7

Vinárna "U
Šembery"
Bučovice 1990
Ing. arch. Martin Kovařík



1990 VINE RESTAURANT

INTERIOR & FURNITURE DESIGN



Vinárna "U
Šembery"
Bučovice 1990
Ing. arch. Martin Kovařík





My work, my soul